

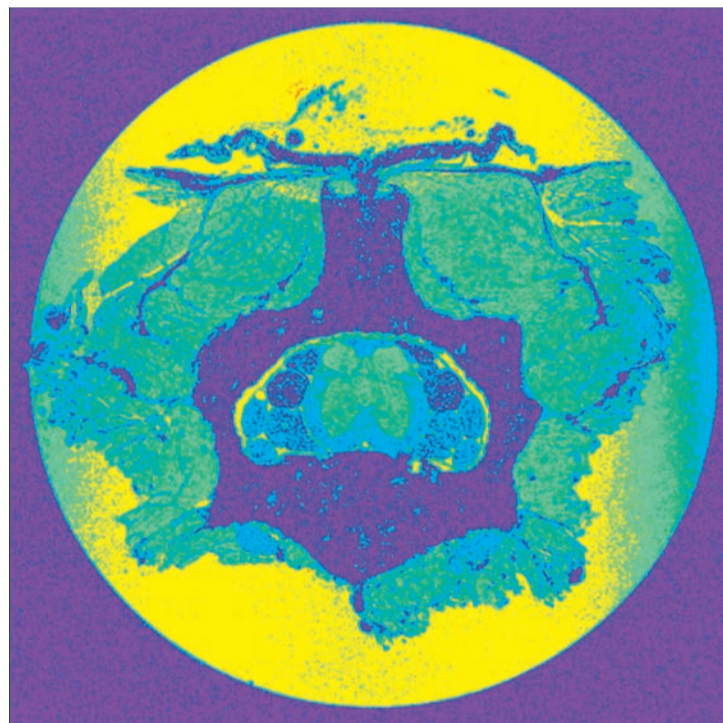
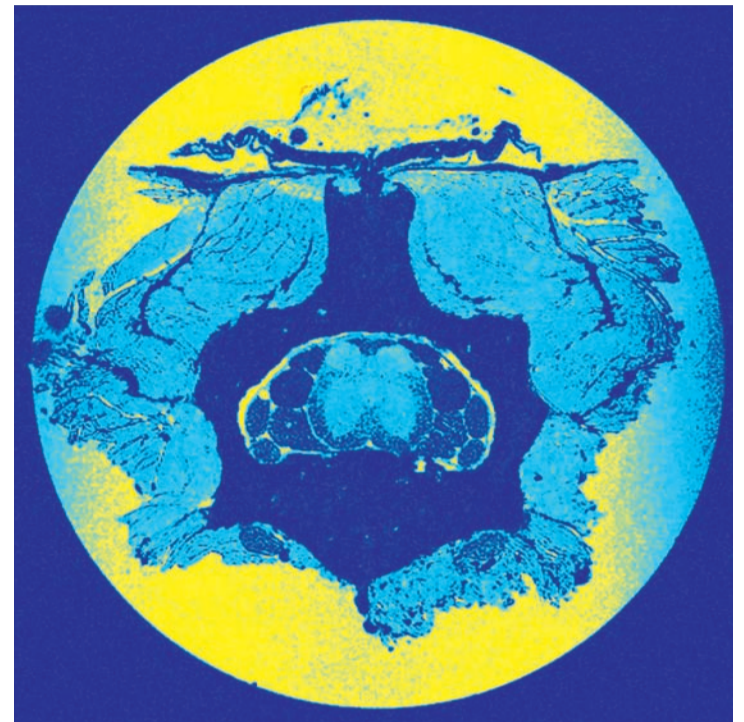
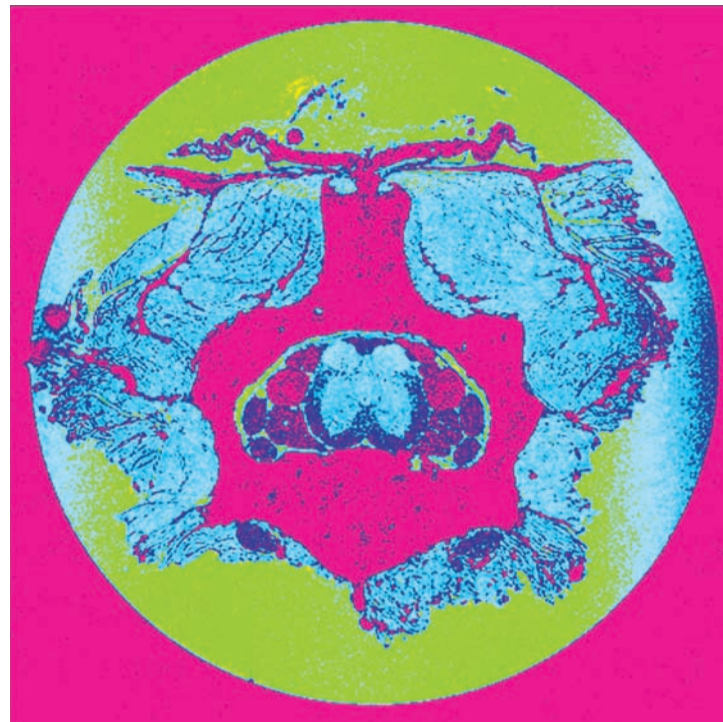
Motor Neuron Disease Symposium

ANS Satellite Meeting

**Queensland
Brain Institute
The University
of Queensland,
Brisbane,
Australia**

Aimed at promoting links between members of the MND research community, this symposium will highlight current developments in MND research and give scientists from diverse fields the opportunity to come together to discuss current advances, share ideas and perspectives, and to set the stage for future discoveries.

A series of oral and poster presentations will illustrate the quality and breadth of research in this field. All participants, particularly students, are encouraged to submit abstracts for the poster session.



Topics to be covered include:

- molecular and cellular mechanisms of MND
- genetics of MND
- neuroanatomy and imaging
- diagnostic markers for MND
- treatment strategies

4 – 5 February, 2010

Guest speakers include:

Professor Donald Cleveland, Chair of Cellular and Molecular Medicine, Ludwig Institute for Cancer Research, UCSD, USA

Professor Guy Rouleau, Director, CHU Sainte-Justine Research Center, Canada

Professor Dario Farina, Center for Sensory-Motor Interaction, Aalborg University, Denmark

Professor Peter Schofield, Executive Director and Chief Executive Officer, Prince of Wales Medical Research Institute, NSW

Professor Charles Watson, Executive Dean of Health Sciences at Curtin University of Technology, WA

Further information can be found at www.qbi.uq.edu.au and following the Events link, or by e-mailing events@qbi.uq.edu.au

Supported by the Peter Goodenough MND Research Laboratory at QBI